

# **The Role of Design in Civic Tourism**

# **The Role of Design in Civic Tourism**

**Place Making**

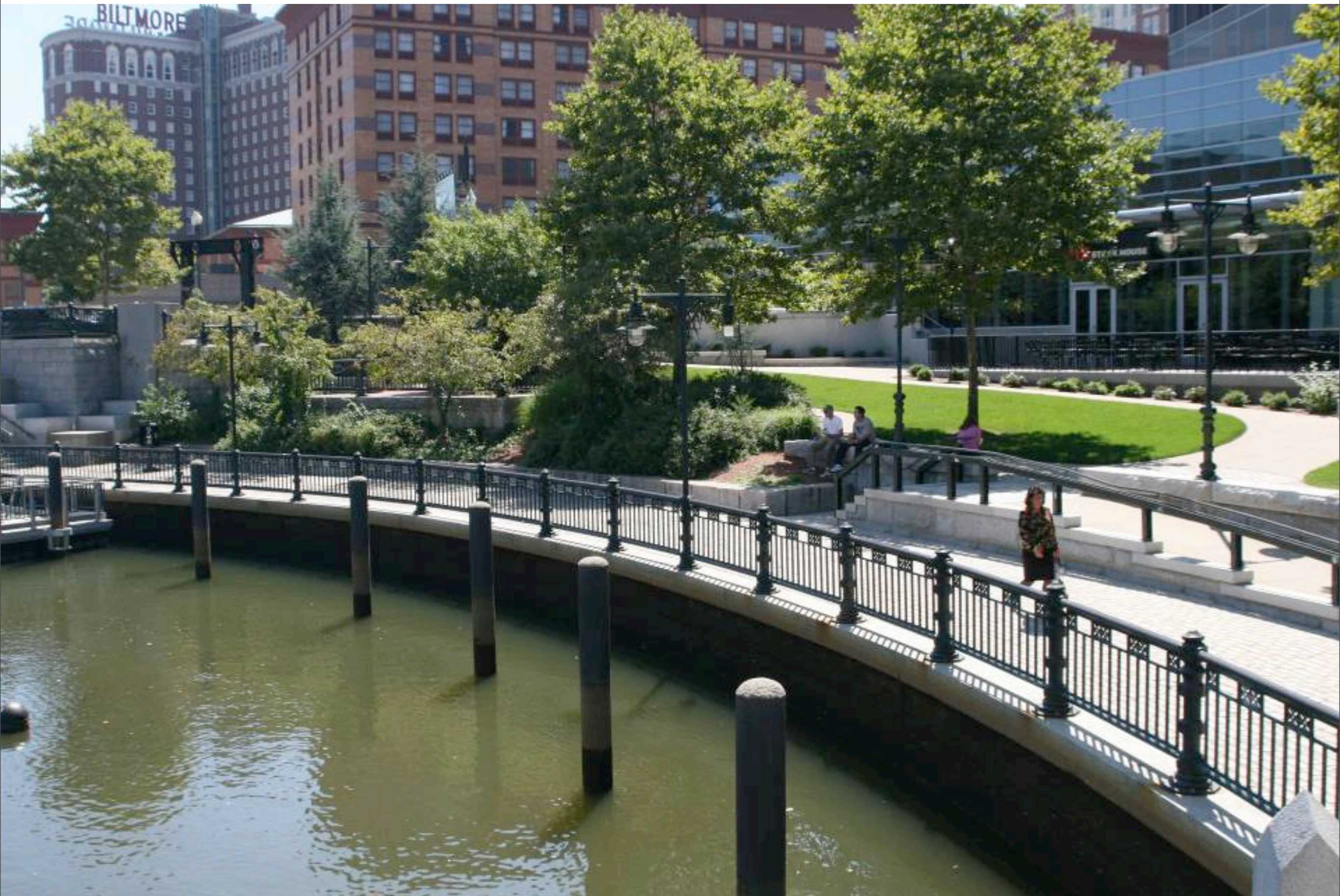
**Place Finding**

**Place Nurturing**



















## The Riverfront Development Plan

# A New Vision for Pawtucket



-Rendering by GLA Inc.

**T**he Blackstone Valley has a rich and colorful history. And a river runs through it.

The Blackstone River, its deep and rocky expanse stretching 46 miles from Worcester, Mass., through the Pawtucket area and eventually as the Pawtucket River to Narragansett Bay, has been the catalyst for centuries of change and growth.

And as the 20th century surges quickly toward a new millennium, the Blackstone takes on new importance. Eyes that once scorned the river as a murky, polluted anachronism are viewing it in a new light.

The great mills that ignited the American Industrial Revolution and the

steamboats that churned the waters are gone. But a new and exciting future is at hand - one that promises green walkways connecting historic sites, renewed landscaping, more public access and open space parks, additional and improved boat landings and a floating "classroom" to teach the next generation about the river that was old when the first Native Americans stared at the gushing waters hundreds of years ago.

Few entities have provided what the Blackstone has

given us and our ancestors: jobs, recreation, food and drinking water, transportation - and power.

Carved 12,000 years ago by a melting glacier as it gouged

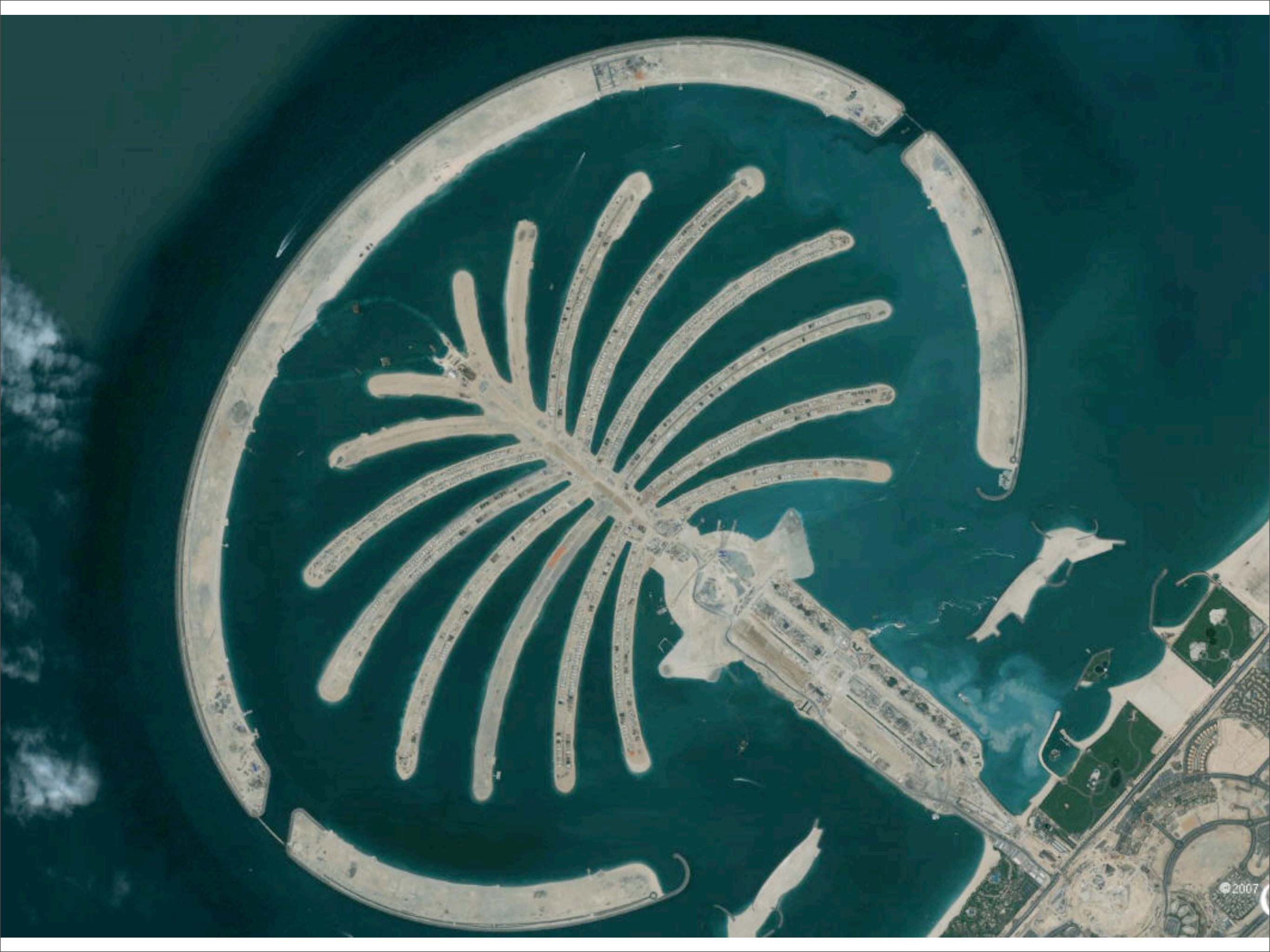
**THE  
Times**

-Continued Page 2



















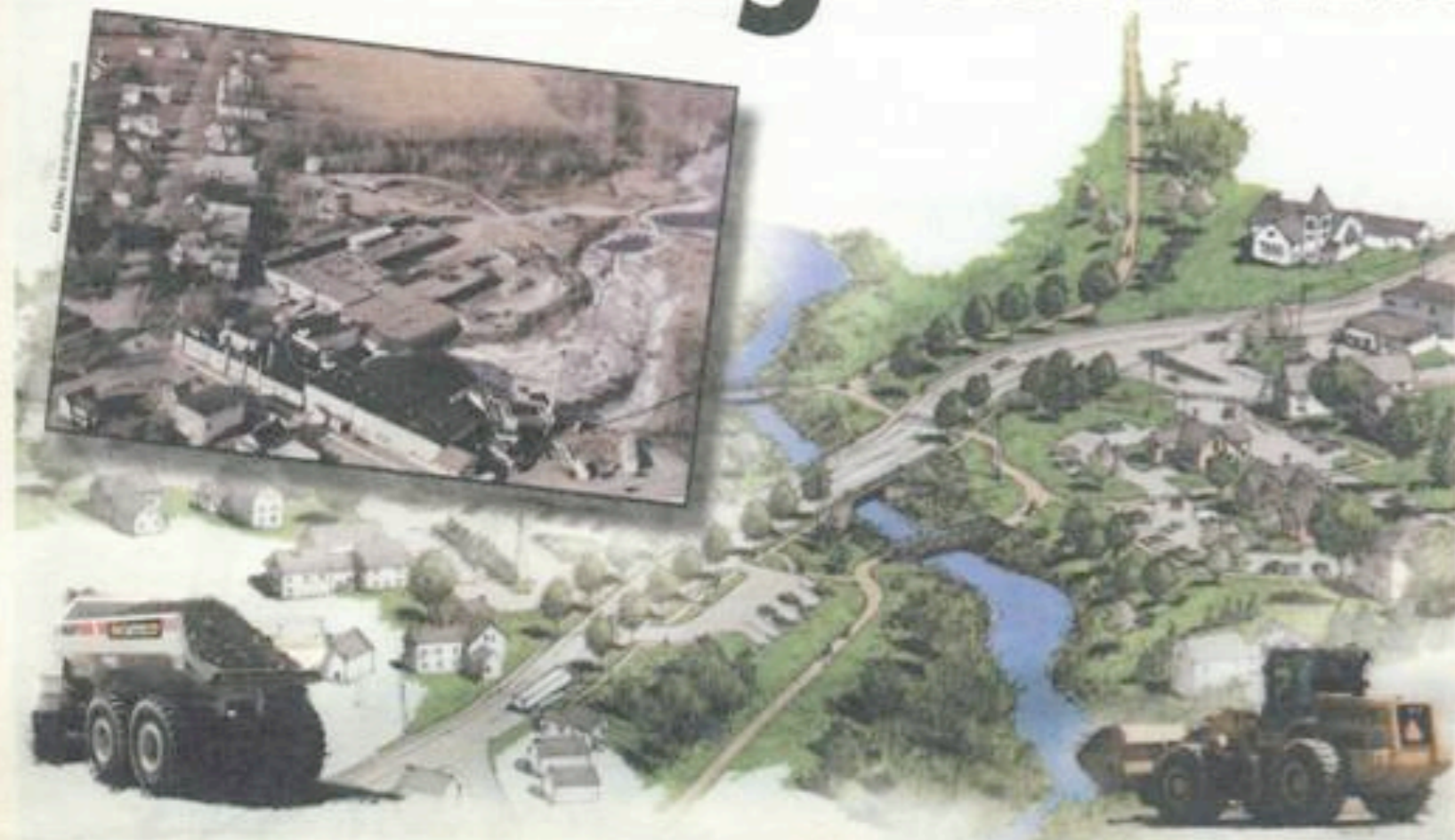
# MAINE TIMES

August 30 - September 5, 2001

VOL. 34 NO. 17

50 cents

## Rethinking Corinna



*Its polluting mill gone, 'a hearty lot' looks forward*

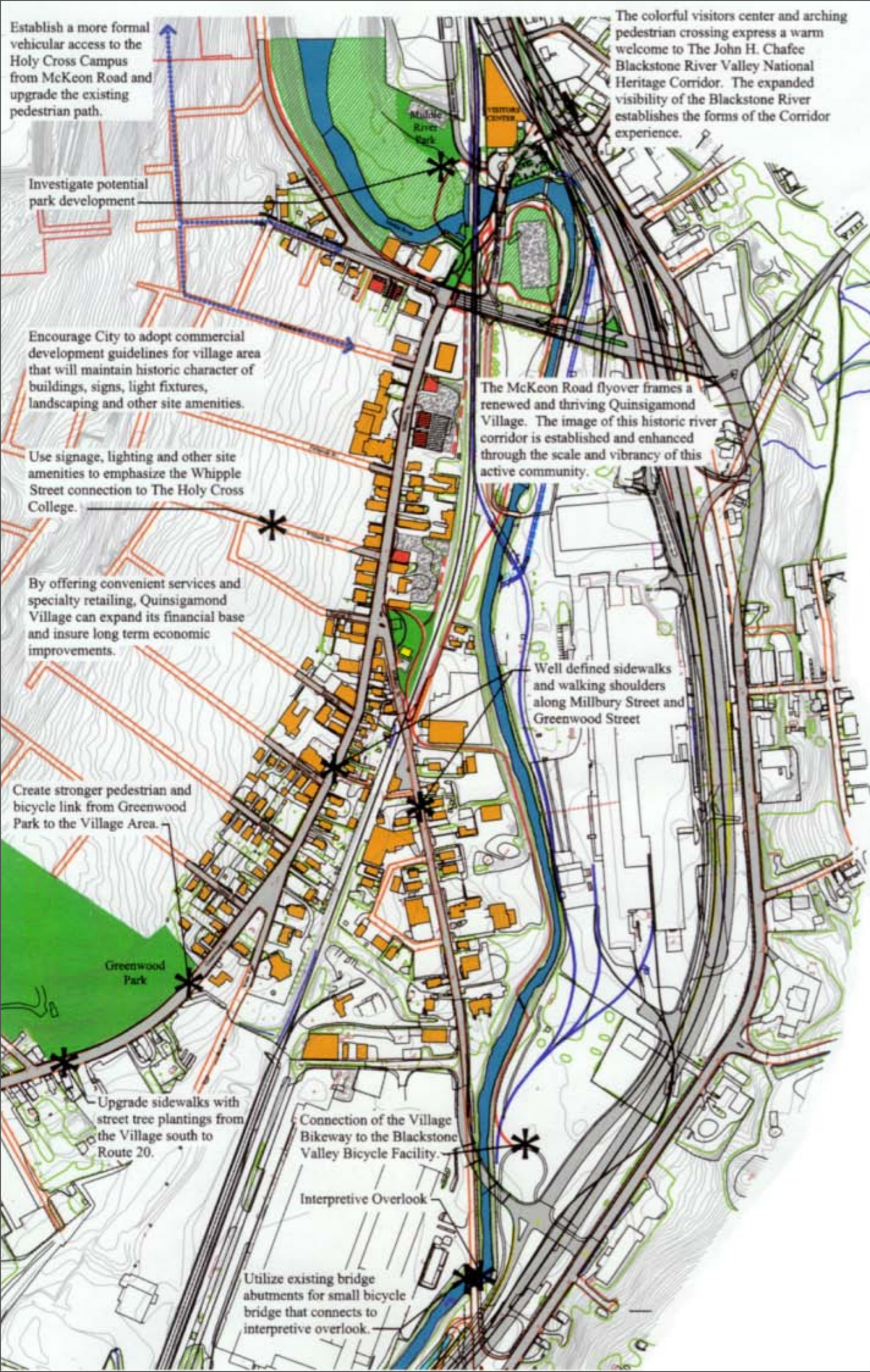
By PHYLLIS AUSTIN Senior Writer

**F**or folks in Corinna, what has happened in their small town in the last year-and-a-half has taken on almost biblical proportions. Main Street has been destroyed and the earth dug up and made into a mound dubbed Mt. Corinna. The East Branch of the Sebasticook River that flows through downtown has been moved, and the main highway, Route 7, relocated.

It's been exciting, to say the least. Residents have flocked to the sidelines of the 23-acre construction site to watch excavators flatten the near century-old village center. Some had tears in their eyes, said Marvin Lister, a selectman whose business on Dexter Road gives him a front row

seat to all the goings-on. "The demolition stirred a lot of memories," he said. Lister watched it with his neighbors, thinking of how his mother worked for 45 years at the Eastland Woolen Mill, never aware of the chemical pollution the facility was dumping into the river. *continued page 12*





































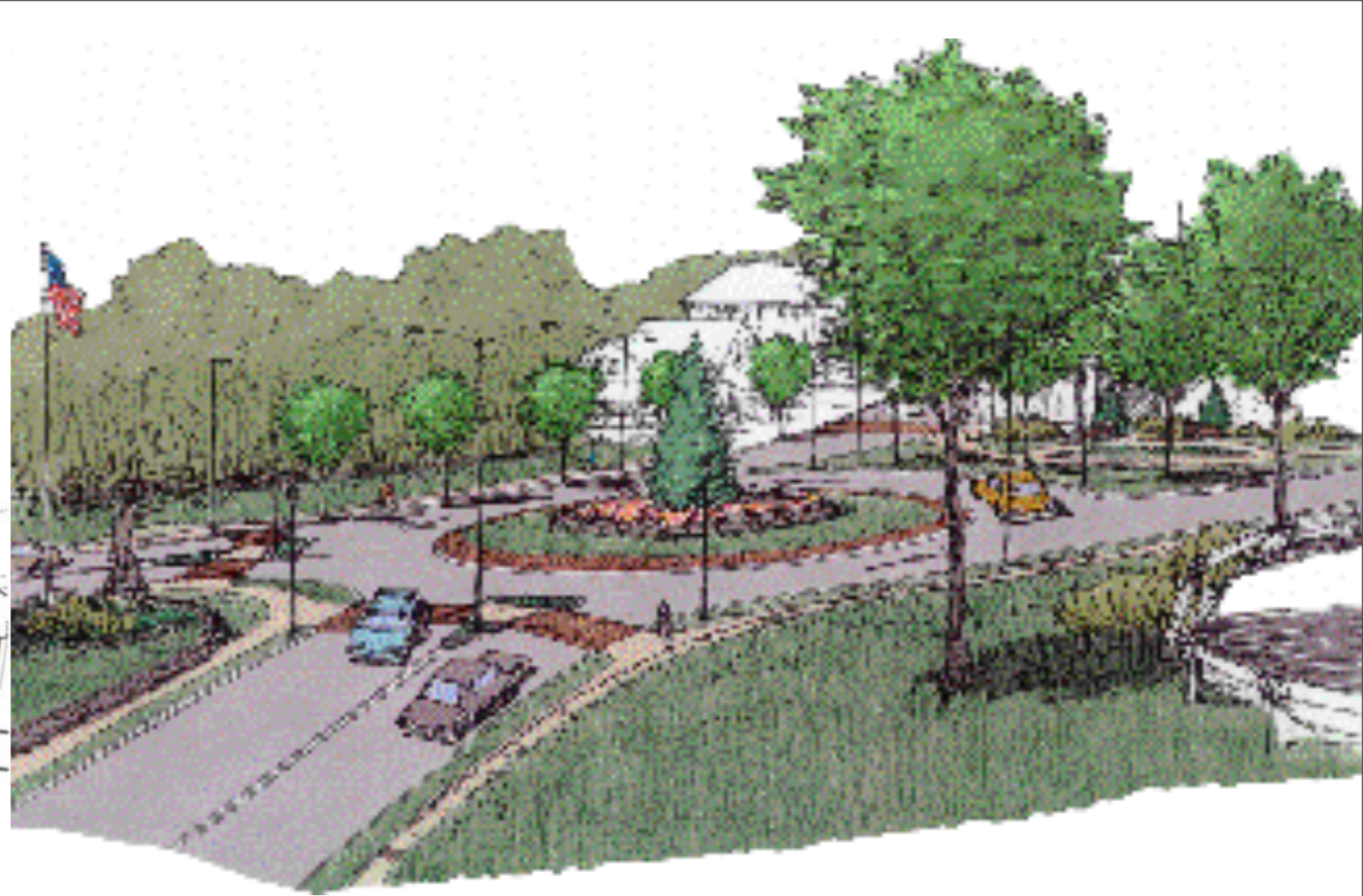
















VETERANS  
MEMORIAL  
AUDITORIUM

VETERANS  
MEMORIAL  
AUDITORIUM

RENOVANCE































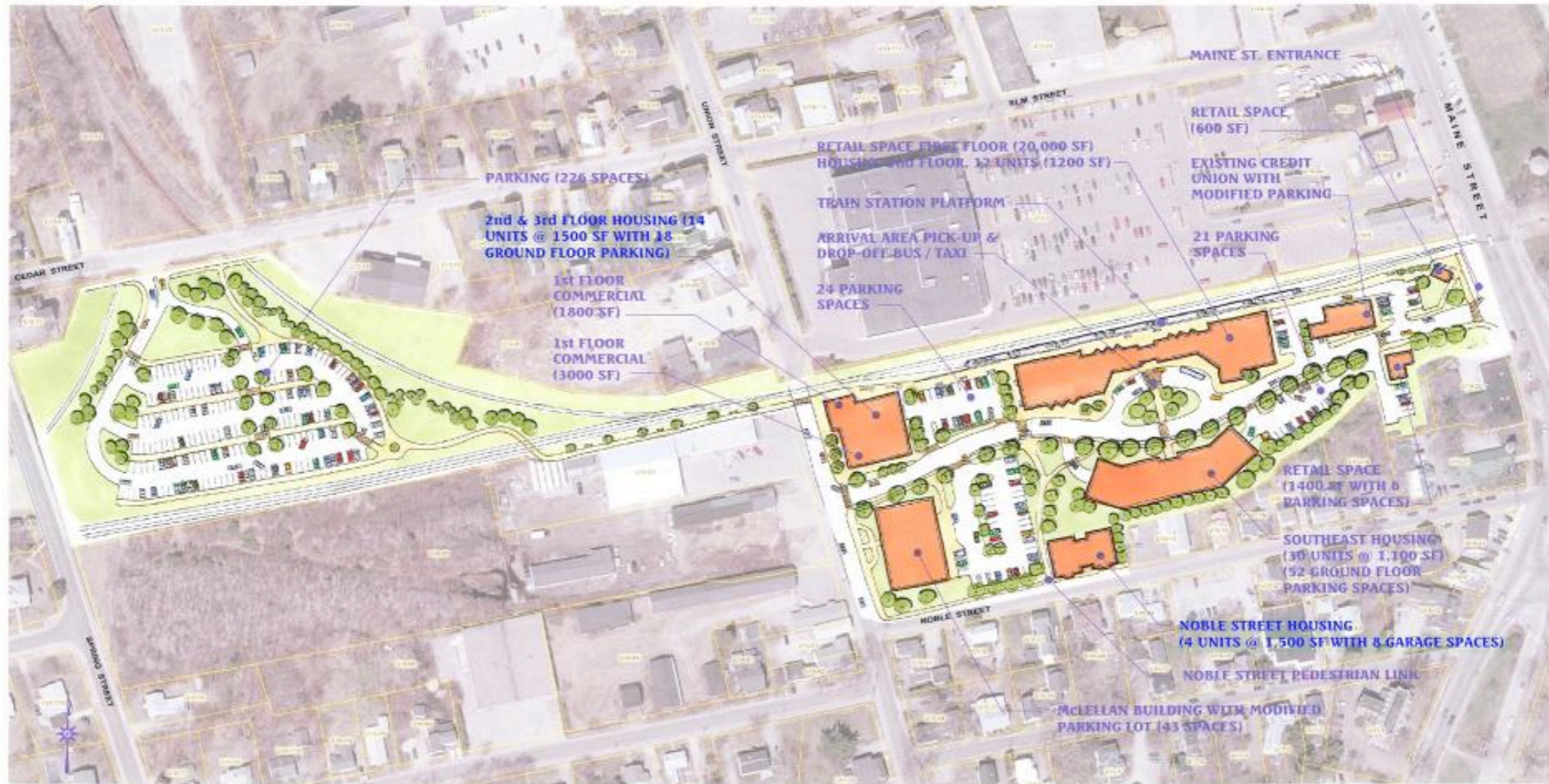








# WORKSHOP MASTER PLAN 2



July 14, 2005

Maine Street Train Station  
BRUNSWICK, MAINE







































AMSTERDAM >













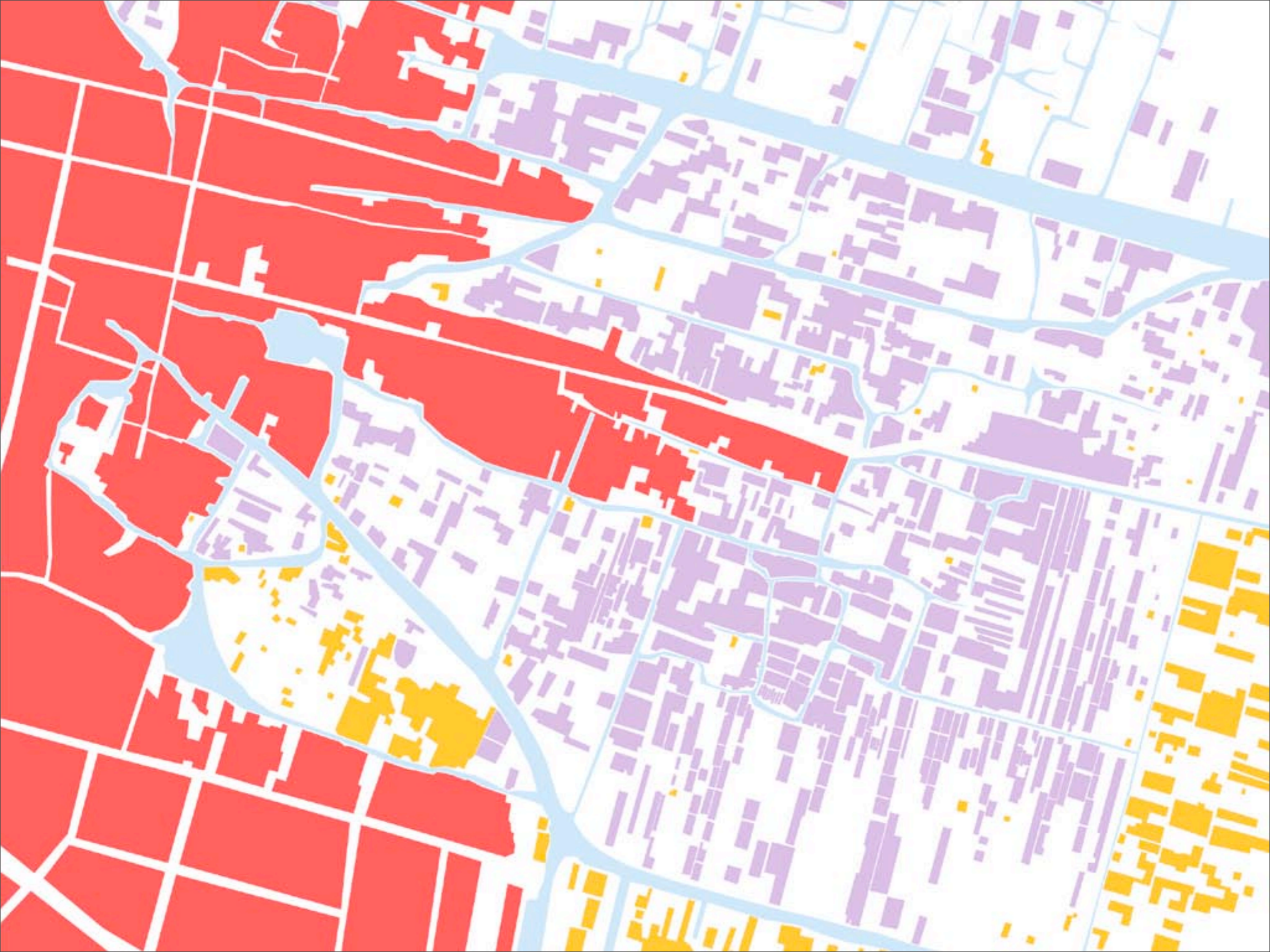
















PIKE PLACE MARKET >









# MARKET OVERVIEW MAP

NORTH

ELLIOTT BAY

ALASKAN WAY

WESTERN AVENUE

PIKE PLACE

POST ALLEY

PIKE PLACE

PIKE PLACE

PIKE PLACE

PIKE PLACE

PIKE PLACE

PIKE PLACE

PIKE PLACE

PIKE PLACE

PIKE PLACE

PIKE PLACE

PIKE PLACE

PIKE PLACE

PIKE PLACE

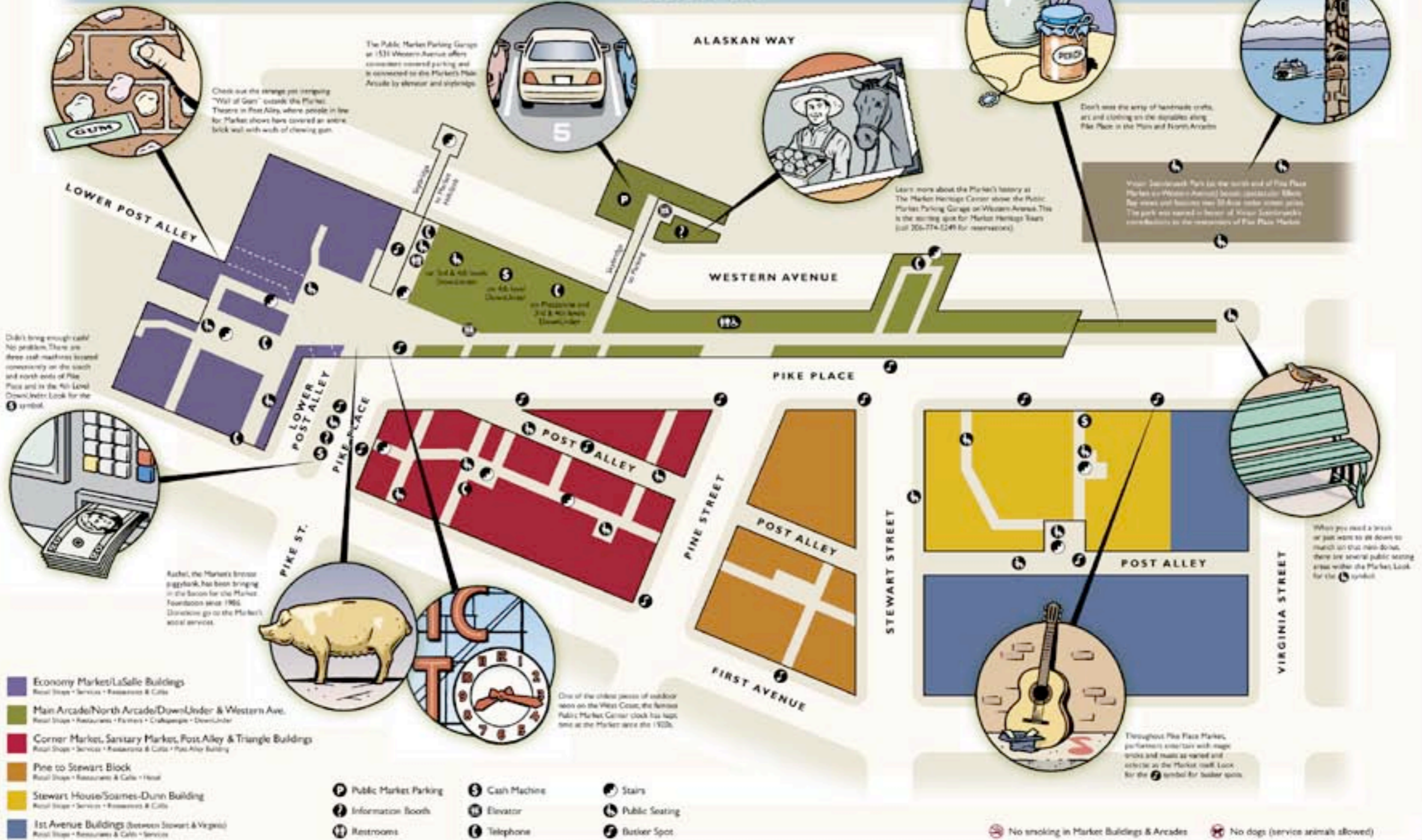
PIKE PLACE

PIKE PLACE

PIKE PLACE

PIKE PLACE

PIKE PLACE



## This Market is yours.

Encompassing nine acres and 100 years of history, Pike Place Market is as rich and colorful as Seattle itself. Maybe that's why many locals call the Market "The Soul of Seattle."

The Market opened on August 17, 1907, after Seattle citizens became fed up with the increasing cost of produce and the middlemen who overcharged consumers and shortchanged farmers. Seattle City Councilman Thomas Revelle stepped in to establish a public market

at the intersection of Pike Place and 1st Avenue—a market where consumers could "meet the producer" of their goods directly.

A century later, Pike Place Market is known internationally as America's premier farmers' market and is home to

240 year-round commercial businesses; 190 craftspeople and 120 farmers who rent table space by the day; 240 street performers and musicians; and 500 residents.

The Market's famous neon sign and clock—one of the oldest neon signs on



the West Coast—welcomes 10 million visitors each year. Beneath the sign lives Rachel, the 550-pound bronze piggybank that raises almost \$10,000 a year for the Market's social services.





# MARKET DIRECTORY

## OVERVIEW



### ECONOMY MARKET & LASALLE BUILDINGS



#### ANTIQUES, ART & COLLECTIBLES

Art Staff Gallery  
Ed Newbold Wildlife Art  
Studio Solano

#### CLOTHING & ACCESSORIES

J&J Gifts & Apparel  
Pike Place Outfitters

#### GIFTS & MERCHANDISE

Best Flowers  
Foot & Pike News  
Kaven's Book Services  
Kings 'n' Things  
Living News  
The Great Wind Up

#### RESTAURANTS & TAKE-OUT

M&L Bites  
Belly Spicework  
Cruce de France  
Cruce's Winter Press  
Deluxe BBQ  
El Bites  
La Roca Bistros Express  
Mediterranean Bites  
Pike Pigale  
Soul Food Stop  
Ward Diner Deli

#### SERVICES & ENTERTAINMENT

Chapel of St. Martha & Mary  
Pianos Foundation  
Pike Place Dental  
Pike Place Market Purchase Assn.  
Pike Place Market Preservation & Development Authority

#### Ticket Ticket

Top of the Market  
Seaweed Producers/Market  
Theater  
Washington Wine Commission

#### SPECIALTY FOOD & BEVERAGE

Bezugs Station  
Belly Bean Diner  
Belavreni Specialty Food & Wine  
Doo & Joe's Place  
Garlic Garden  
Market Cellar Winery  
MarketOps  
Pike Place Fish  
Pike Place Box  
Simply the Best

### PINE TO STEWART BLOCK



#### ANTIQUES, ART & COLLECTIBLES

Orin Ray Gallery

#### GIFTS & MERCHANDISE

Foot  
Joe La Table  
Whisper Jewelry Fine Living

#### RESTAURANTS & TAKE-OUT

Roca  
Compagnie  
Cafe Compagnie

#### LODGING

Joe at the Market

#### SERVICES

New System, Artisans  
New London Table

#### SPECIALTY FOOD & BEVERAGE

Becher's Sandwich Cheese  
Belavreni Cheesecake  
Local Later Art, Coffee & More

### MAIN ARCADE, NORTH ARCADE, DOWNUNDER, WESTERN AVENUE (West side)



#### ANTIQUES, ART & COLLECTIBLES

Artique Touch  
Chickory's Web  
Golden Age Collectibles  
Greenleaf's Arts  
Museum Car Dealer  
Old Friends Antiques  
Old Seattle Paperworks  
Pete & Ink Drawings by Patrick T. Bee  
Pike's Book Art  
Presents by Mike Elzer  
Twilight Book Collection  
Two English Antiques & Interiors  
Tweedings

#### CLOTHING & ACCESSORIES

Albion Cuffs  
Cuffs  
Narcissus Leathers  
Makana Shoes  
Taffel Imports

#### GIFTS & MERCHANDISE

All Things Lumber  
Annie's Gifts & Collectibles  
Artisan Productions  
Ego Book Gifts  
Ego's  
Ego's Toys  
Ego's Toys  
Ego's Toys  
Ego's Toys

#### RESTAURANTS & TAKE-OUT

Archer Inn  
Loren's Restaurant  
Market Grill  
Pike Place Cheese Gallery  
Sears Cafe & Coffee House  
Tuesdays Cafe

#### SERVICES

Bakery Barber Shop  
Christopher's Lane  
Downunder Tool Bank  
Heritage Laser  
Heritage Music  
Museum Lounge Tables  
Pike Place Outfitters & Freshfood  
Public Market Parking Garage

#### SPECIALTY FOOD & BEVERAGE

Caramels & Sips  
Chicken Valley  
Duckie's Chocolates  
Gig Fish  
Gourmet's Produce  
Gus D'lish  
Honey Bee Produce  
Milk's Playground  
Pike Place Bakery  
Pike Place Fish  
Pike Place Grocery  
Pike's Produce  
Pike's Produce  
Pike's Produce  
Pike's Produce

#### SERVICES

Bakery Barber Shop  
Christopher's Lane  
Downunder Tool Bank  
Heritage Laser  
Heritage Music  
Museum Lounge Tables  
Pike Place Outfitters & Freshfood  
Public Market Parking Garage

#### SPECIALTY FOOD & BEVERAGE

Caramels & Sips  
Chicken Valley  
Duckie's Chocolates  
Gig Fish  
Gourmet's Produce  
Gus D'lish  
Honey Bee Produce  
Milk's Playground  
Pike Place Bakery  
Pike Place Fish  
Pike Place Grocery  
Pike's Produce  
Pike's Produce  
Pike's Produce  
Pike's Produce

Shop from craftpeople and farmers daily in the Pike and North Arcades. Choose from an amazing selection of original artwork and an abundance of locally grown farm products.

### CORNER MARKET, SANITARY MARKET, POST ALLEY MARKET BUILDING, TRIANGLE BUILDING



#### ANTIQUES, ART & COLLECTIBLES

Miguel's Mexican Folk Art

#### CLOTHING & ACCESSORIES

Earth, Wind & Fire  
Erasmo Design  
Old Duffin Inn

#### GIFTS & MERCHANDISE

African Treasures  
Der Jackson  
Dig Alley  
Dragon's Toy Box  
Home of White  
Bicycle Books  
Lantern Light Books  
Lark Book Service  
Made in Washington  
Mudler Pops  
Pike Place Flowers

#### RESTAURANTS & TAKE-OUT

Cafe Nineteen  
Cafe Nineteen  
Cafe Nineteen  
Cafe Nineteen

#### RESTAURANTS & TAKE-OUT

Capablanca Restaurant  
Tahiti King  
James  
La Bona Tavola Truffle Cafe & Specialty Foods  
Leo's Corner  
La Priore Brothers  
Milk in the Market  
New Sun Pastries  
Mr. O's Greek Deli  
Pike Place Deli & Market  
Pike Place Bagel Bakery  
Pike Place Bar & Grill  
Pike Place Cheesecake  
Sho's Lounge  
Siren Cafe  
Three Girls Bakery  
The Redwells

#### SPECIALTY FOOD & BEVERAGE

Cherry Produce  
Gourmet Works  
Green Produce  
Gourmet Shop  
El Peroteo Latino  
Emerald Breads  
Fern's Plant Market  
Frank's Quality Produce  
Jack's Fish Spot  
Oriental Mart  
Pike Place Market Creamery  
Quality Cheese  
Seaside's Best Coffee  
Sly Glass House Sugar  
Slate Food  
Sorenson's Meats  
The Juice Emporium

#### SERVICES

Bokemia Therapeutic Massage  
Mastercard in the Market  
New Mark Tailor  
Paul Louder World Jew

### 1st AVENUE BUILDINGS (Between Stewart & Virginia Streets)



#### ANTIQUES, ART & COLLECTIBLES

Antiques at Pike Place  
Market Graphics

#### CLOTHING & ACCESSORIES

Bonus D. Children's Everything Store  
Loren's Antique Dining  
Maggie's Shoes  
Slate Cafe

#### LODGING

Peppers Hotel

#### RESTAURANTS & TAKE-OUT

Cafe Lina  
Loren's Restaurant & Pub  
La Piche  
M. Stewart  
Sally's  
Sally's Lounge  
Taco Diego  
Turkish Delight  
Virginia Inn

#### SERVICES

American Institute of Acoustic  
Copper Salts

#### RESTAURANTS & TAKE-OUT

Pike Place Market Deli  
Pike Place Market Deli  
Pike Place Market Deli

#### SPECIALTY FOOD & BEVERAGE

Paradise Tea Room  
Pike and Western Wine  
Pike Place Grocery & Deli  
Pike's Chocolate Treasures  
The Loring Breads/Wines of Washington  
White Horse Trading Co.

**Meet the producer.** Pike Place Market was founded to give local farmers an opportunity to sell directly to the public and to provide the public an opportunity to "meet the producer." Pike Place Market's craftpeople continue this tradition by selling handmade works of art directly to the consumer. Farmers and craftpeople are assigned their tables every morning, and locations rotate. So if your favorite farmer or craftperson isn't in the same spot, keep exploring; they are probably just a few steps away!



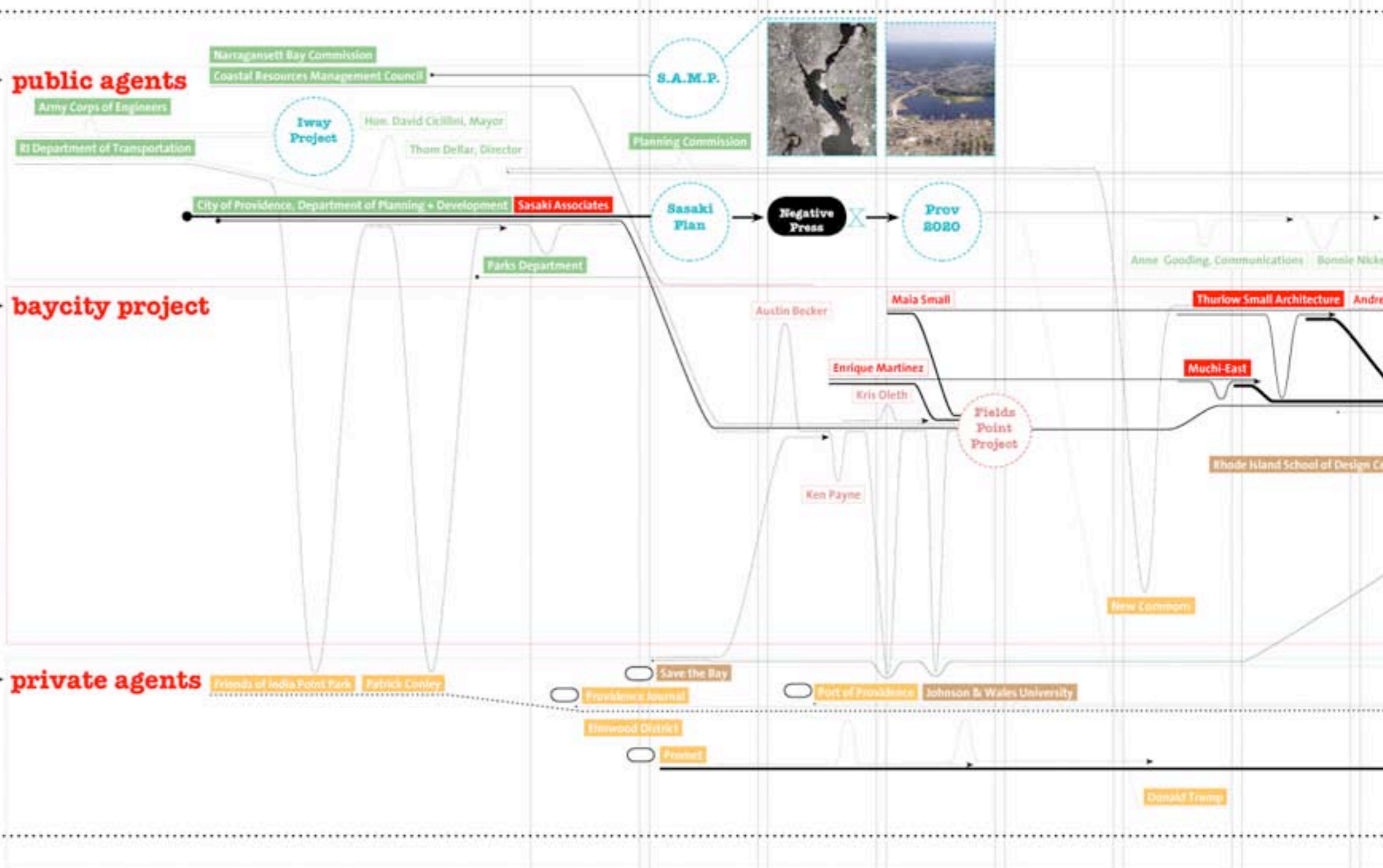






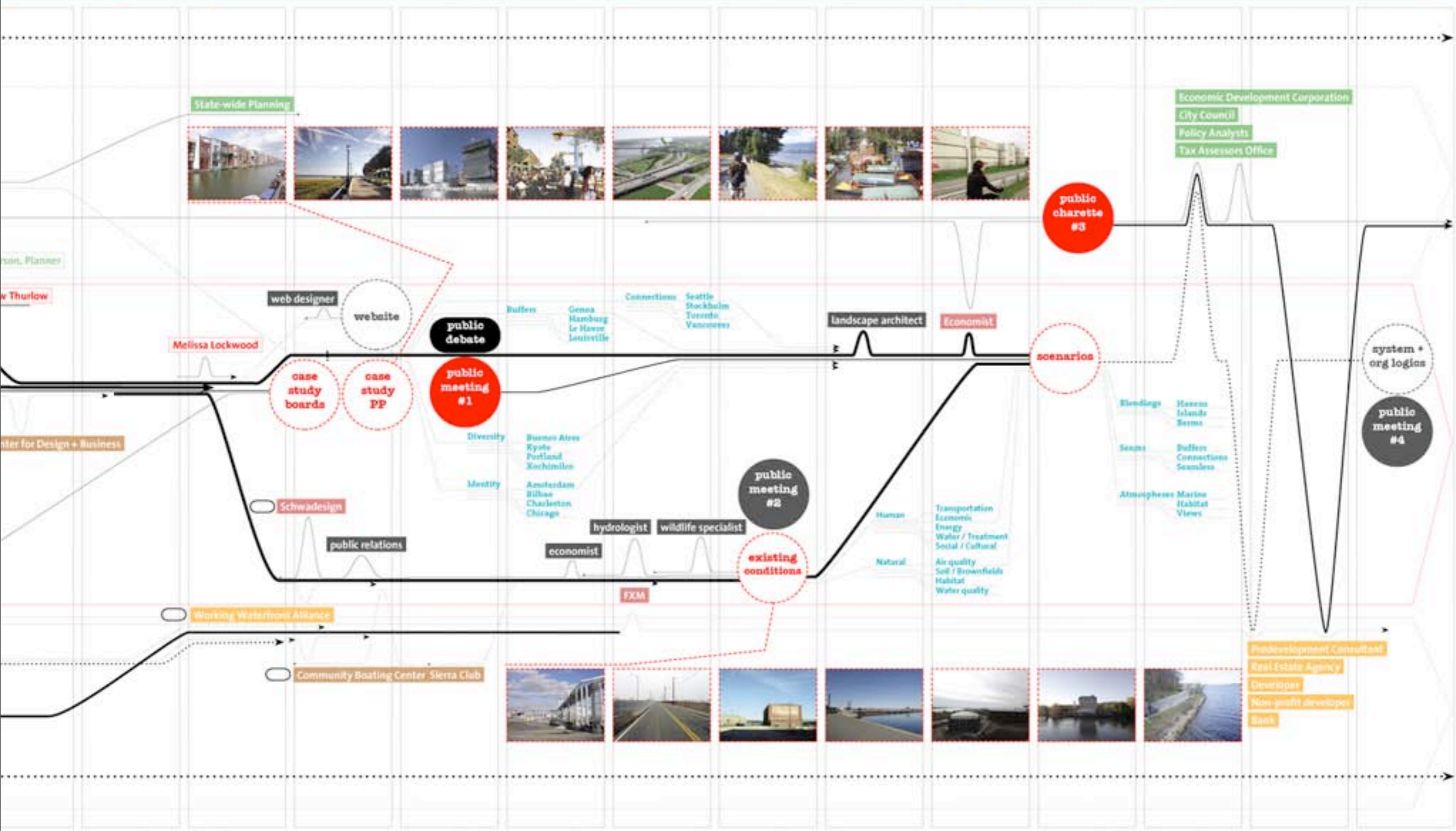






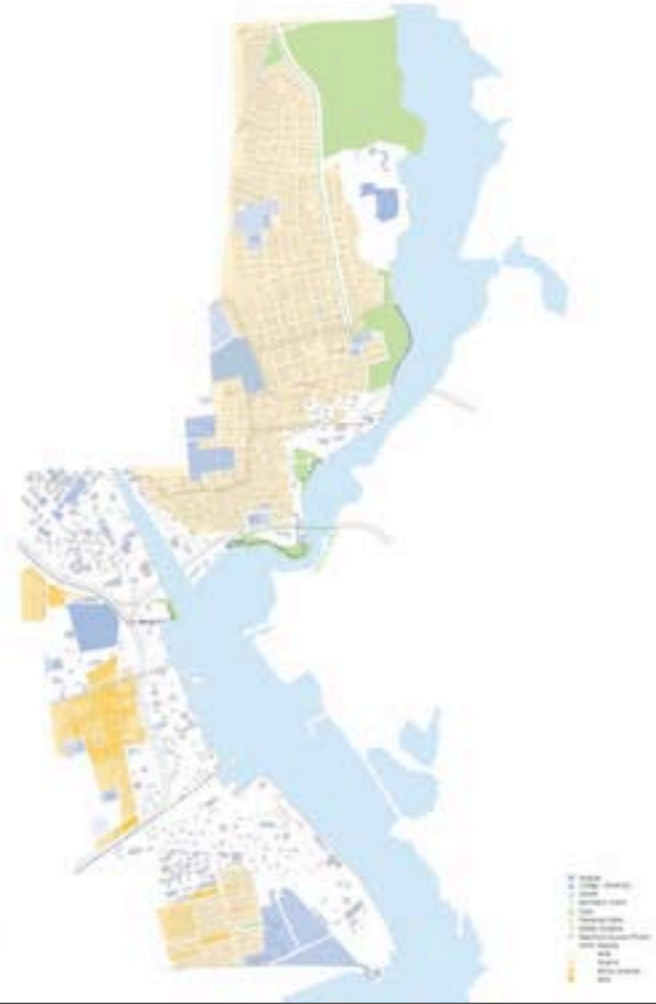
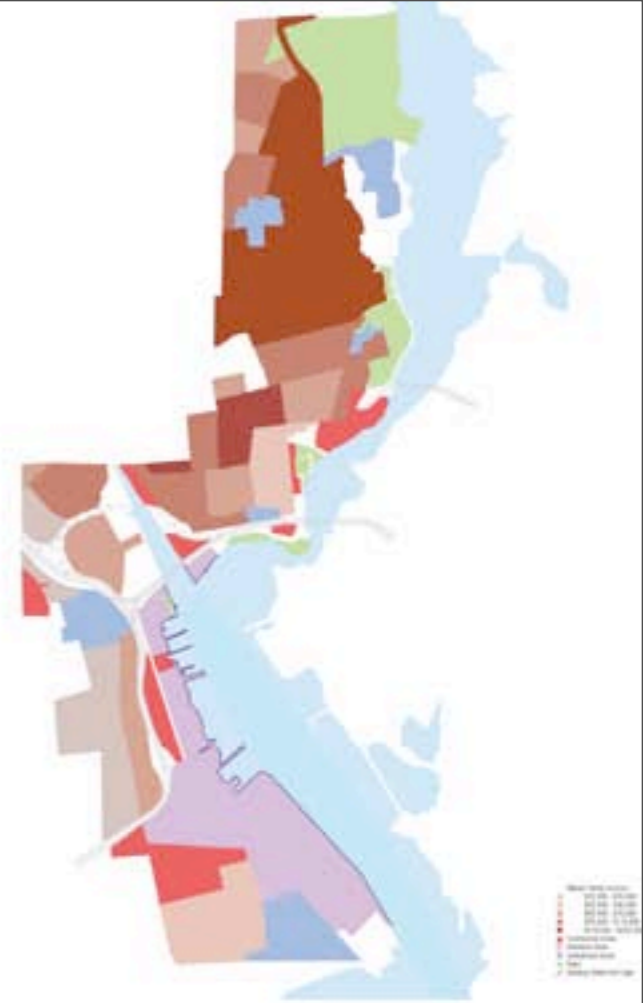
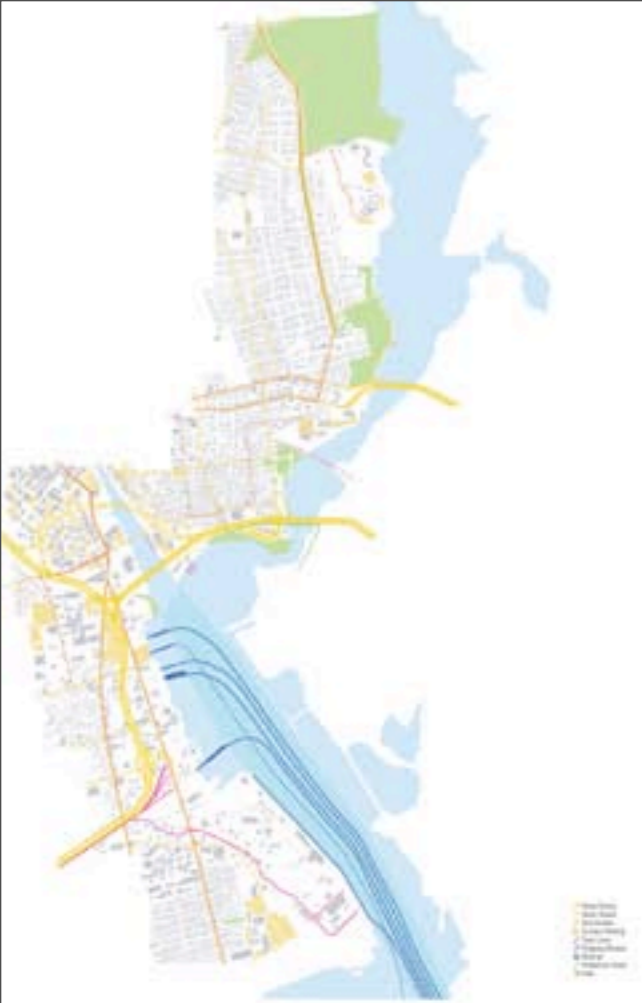


July 07    aug 07    sept 07    oct 07    nov 07    dec 07    jan 08    feb 08    mar 08    apr 08    may 08    june 08    2009    2020

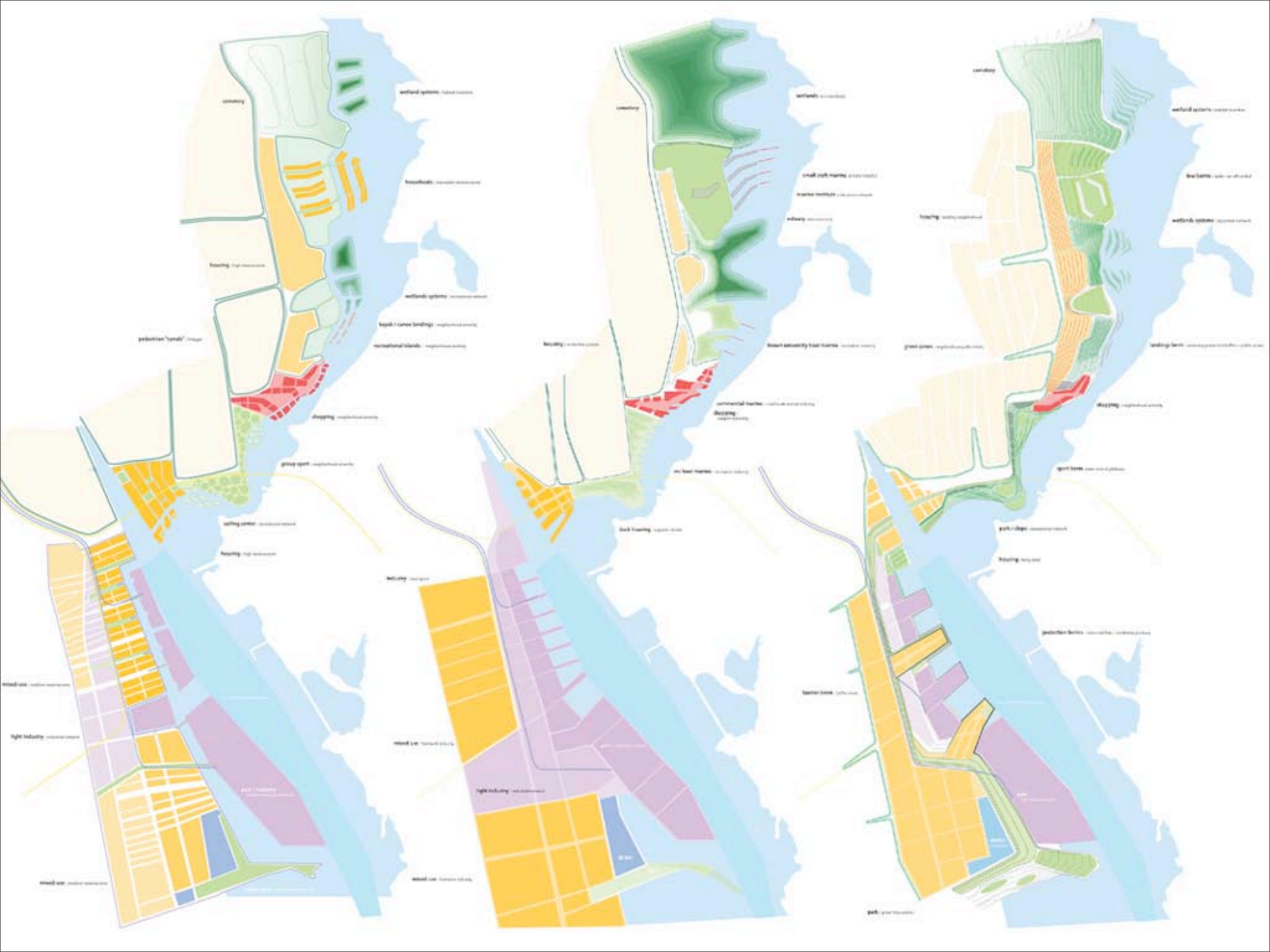


BayCity PHASE 1    BayCity PHASE 2    BayCity PHASE 3

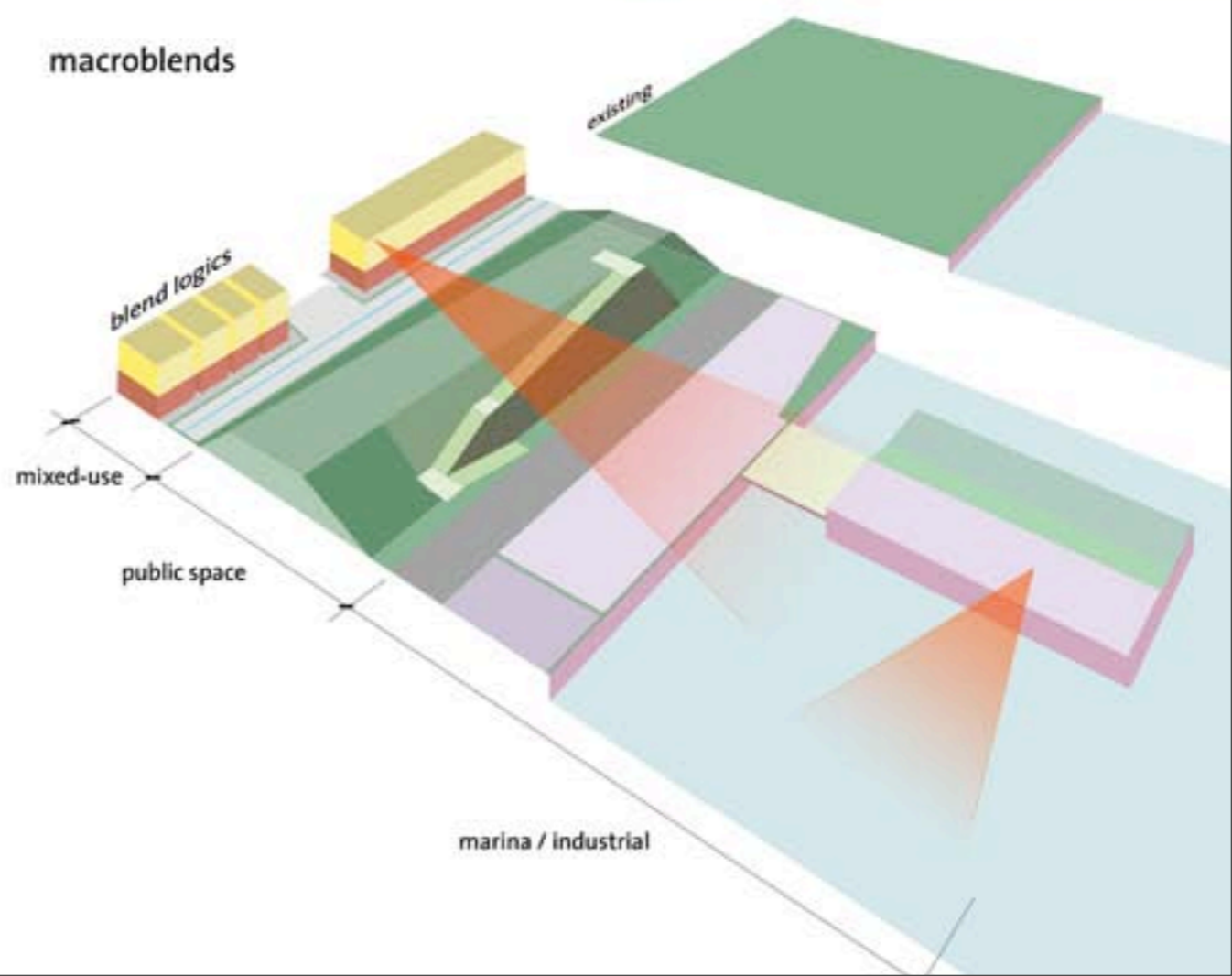
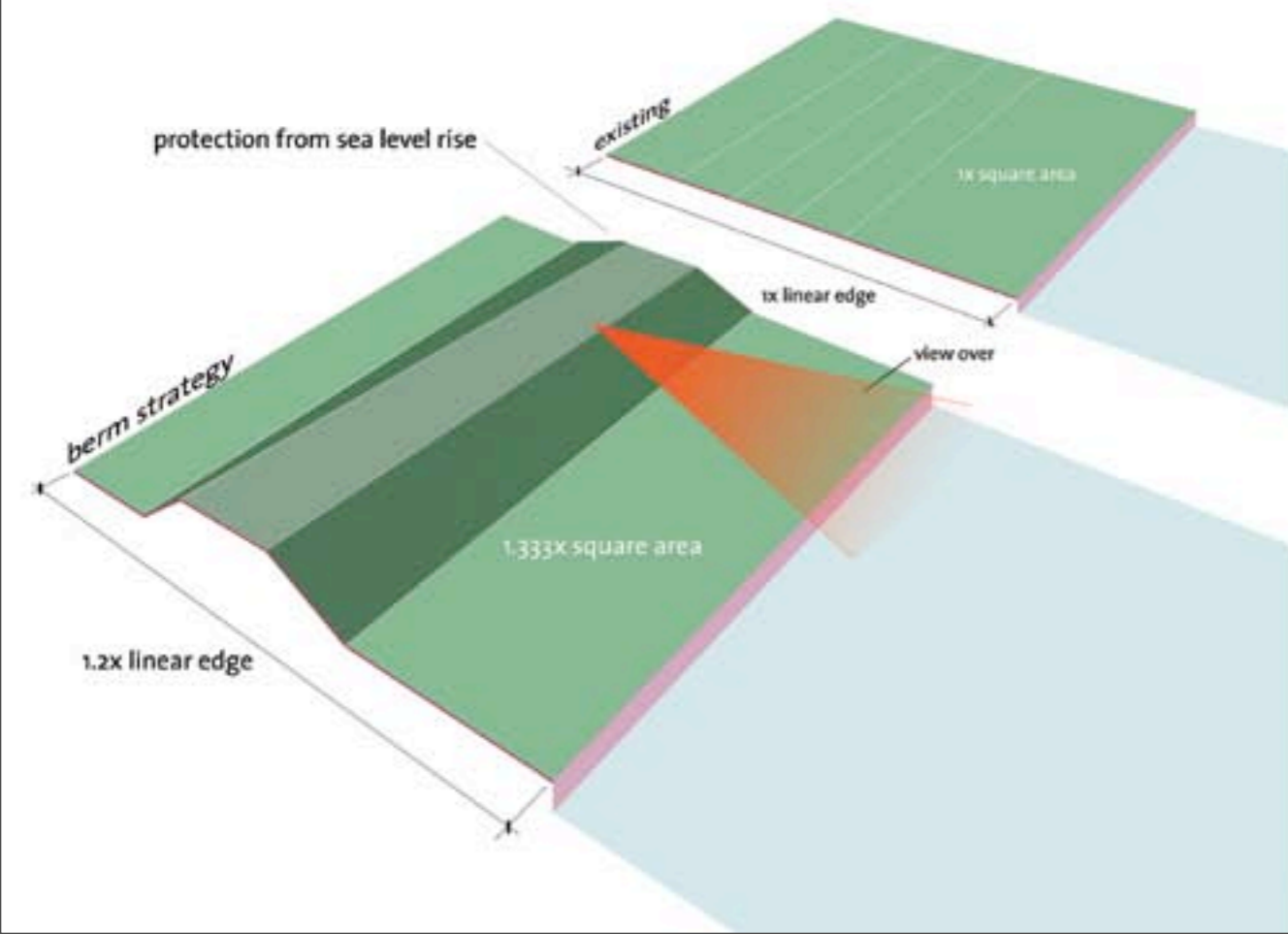
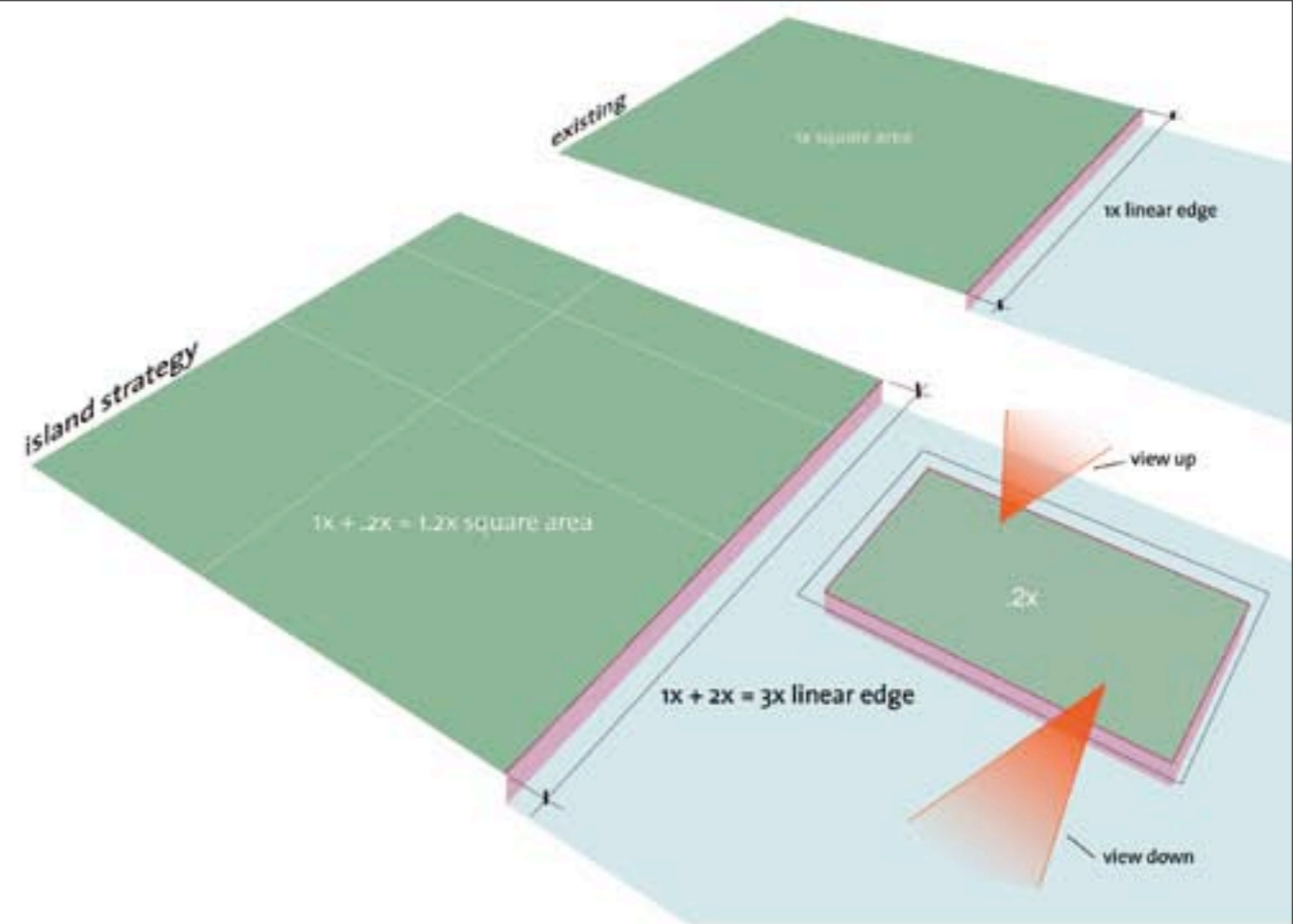
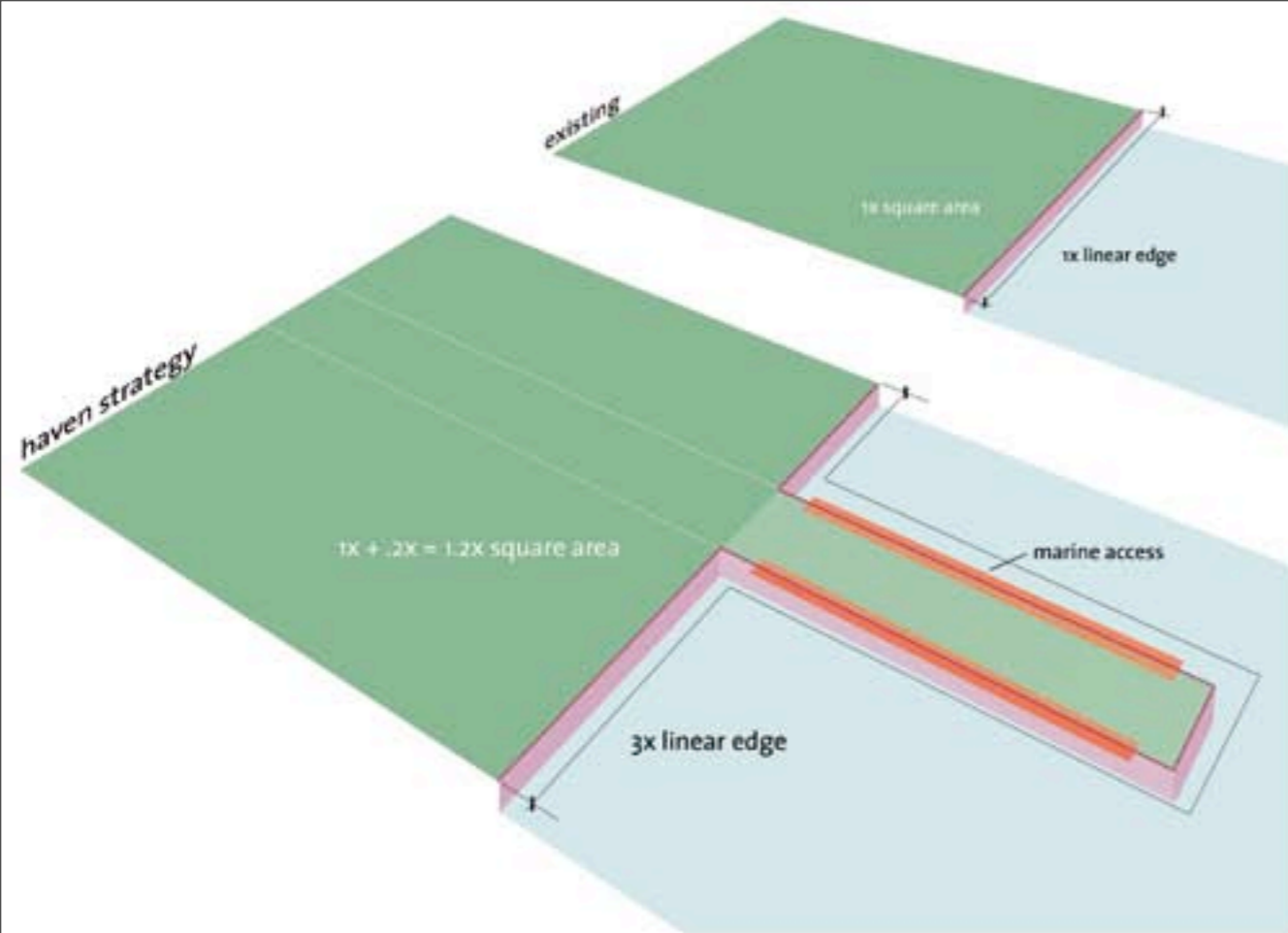


















**Hello!**





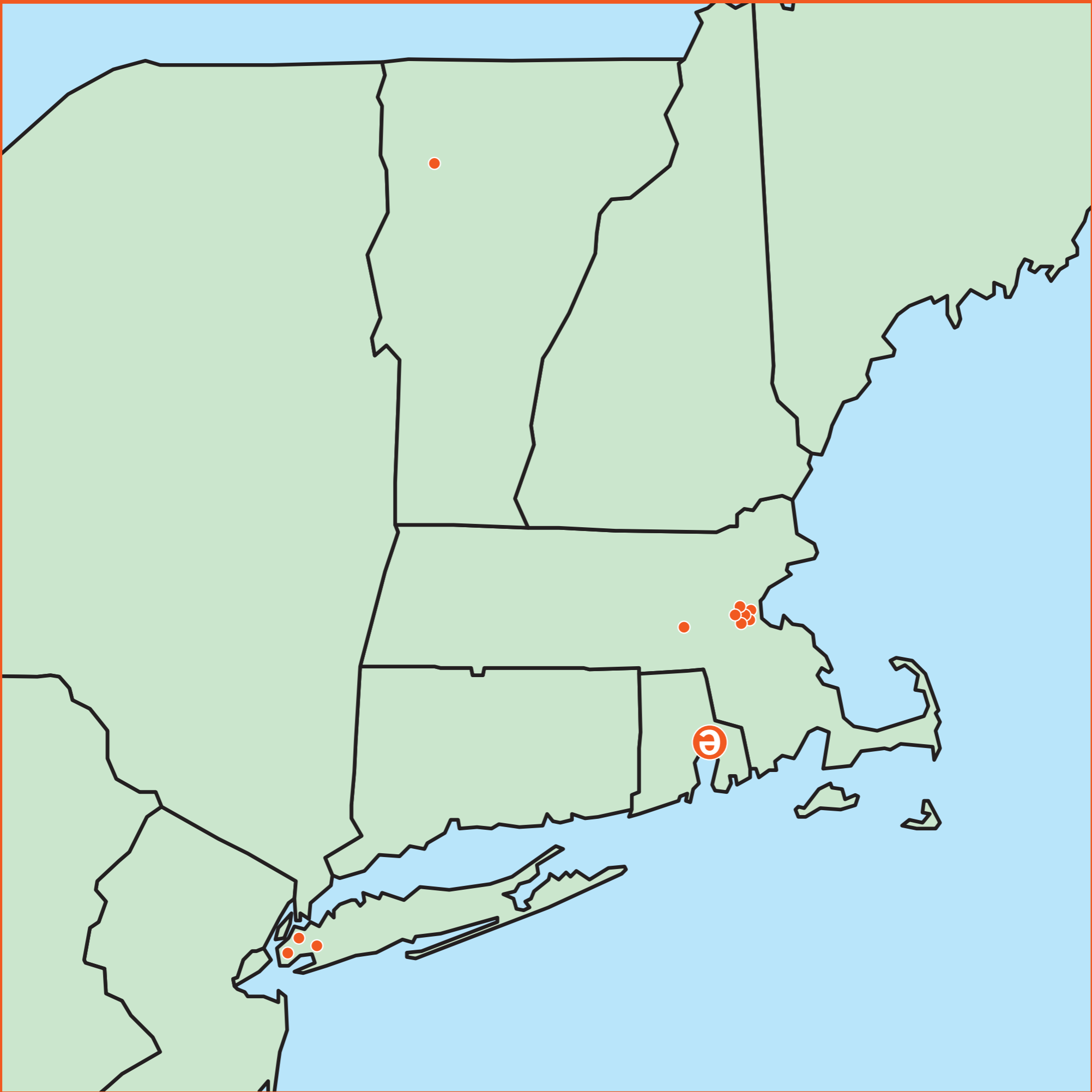




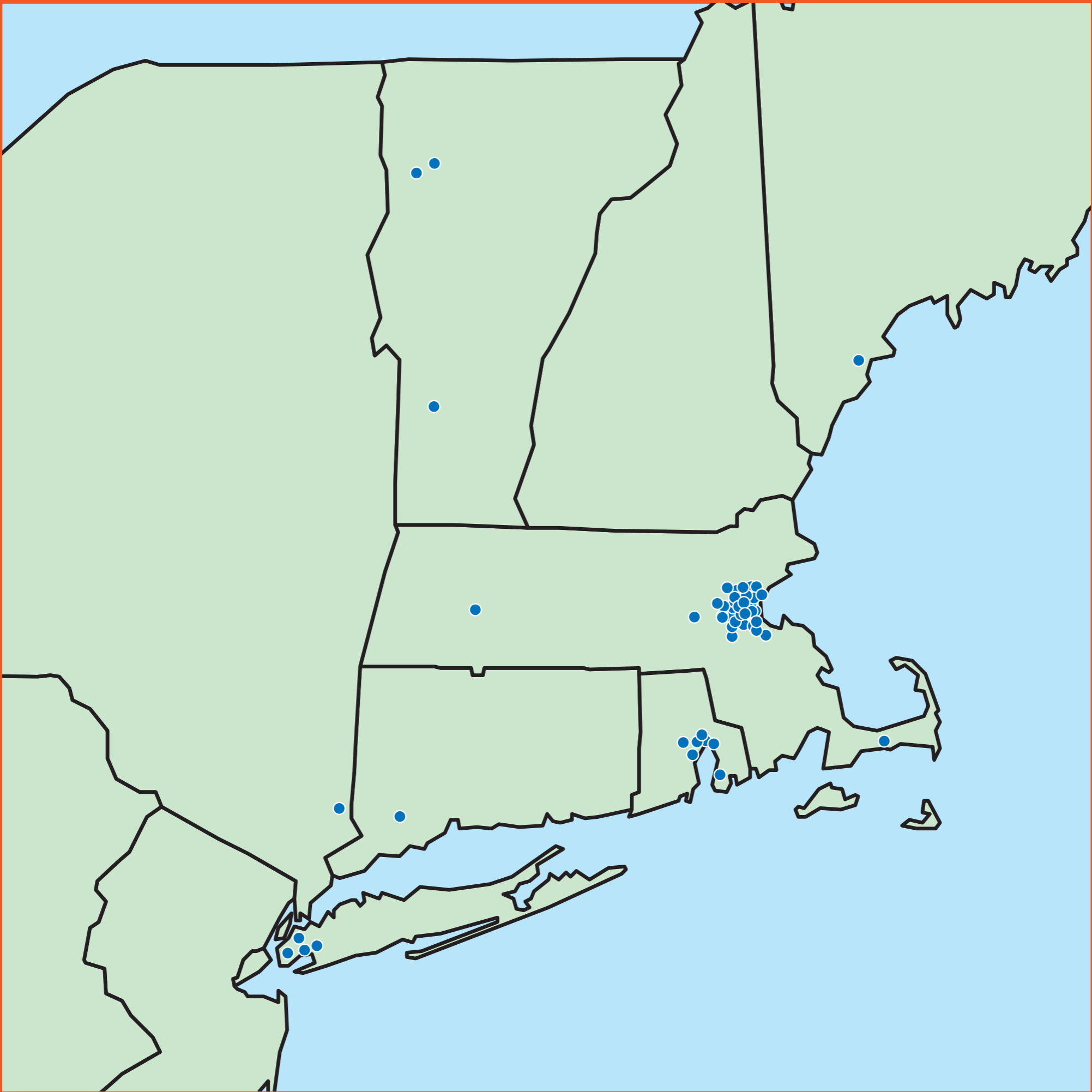


















**We're different.  
We differentiate.**



**How.**



# 7D Process

**Define**

**Discover**

**Distill**

**Determine**

**Design**

**Deliver**

**Debrief**



**11 Years.**  
**35 Ministers.**  
**4 Hubs.**  
**200 Clients.**  
**8 Awards.**



**Identity**

**Logo, type, color**



**Message**

**Name, tagline, voice**



**Collateral**

**Content, context, images, materials**

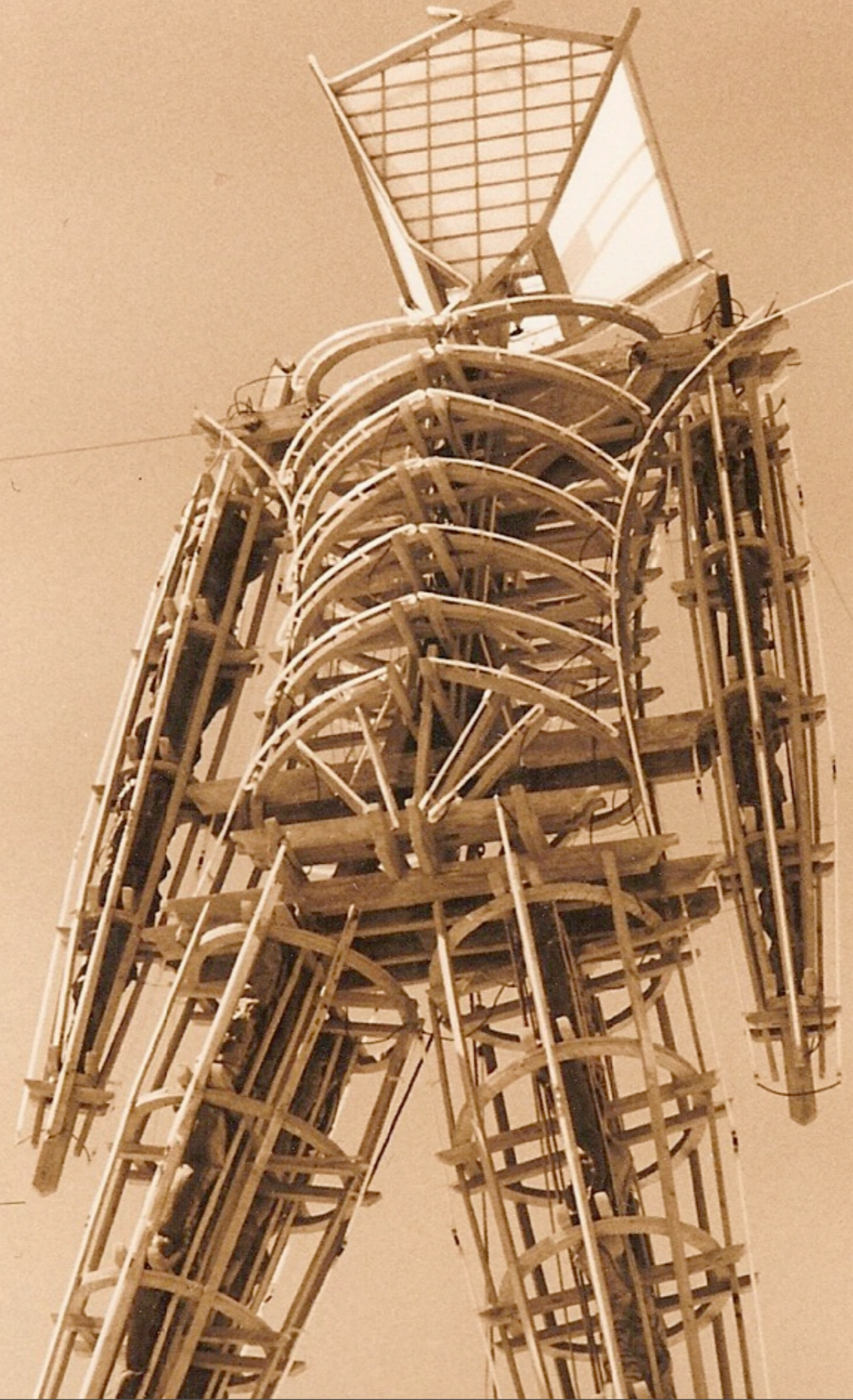


**Brand**



**Experience.**





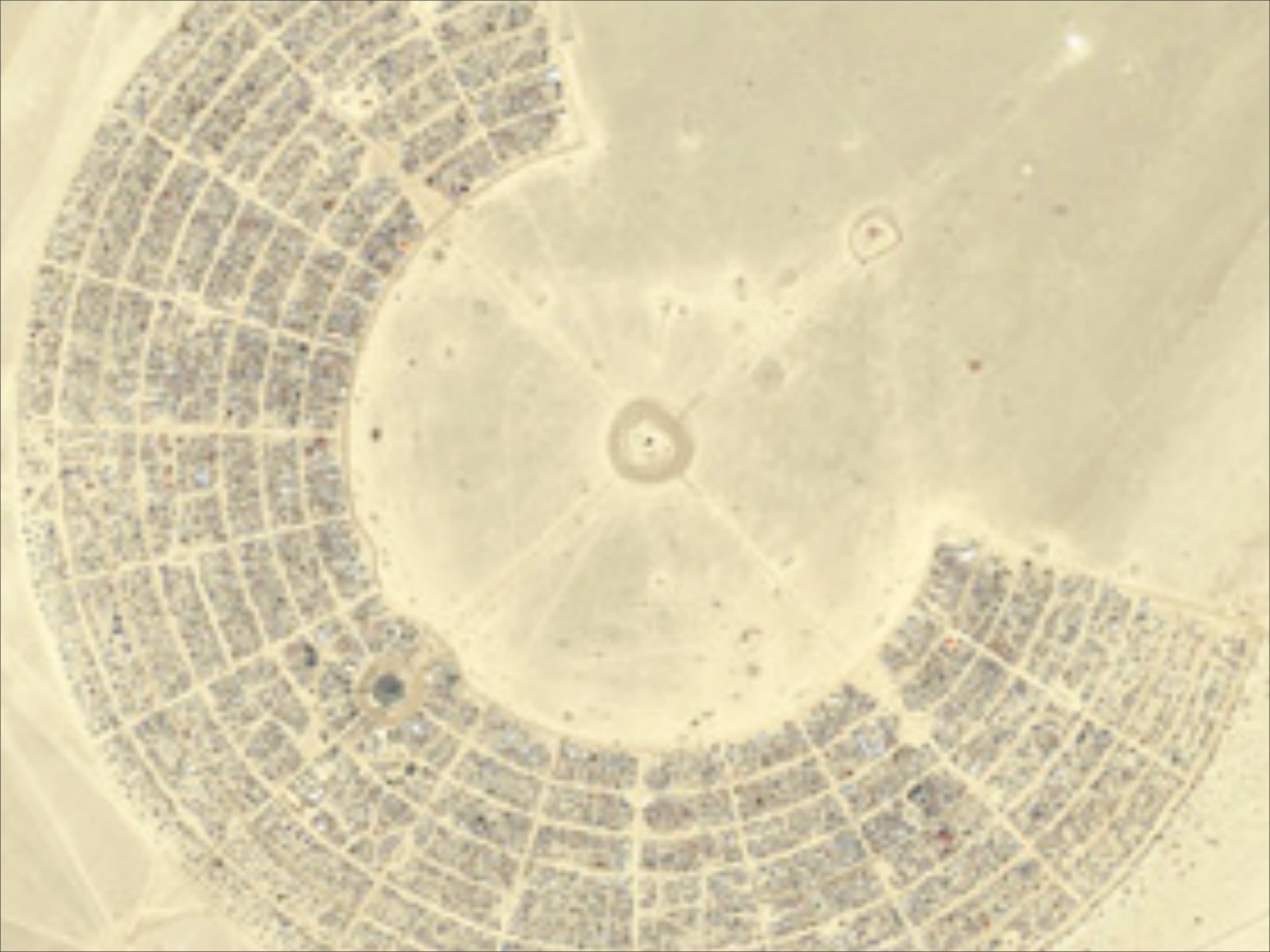
















Flag (Monday - Sunday)

12:00pm-4:30pm

1:00pm-3:00pm

3:00pm-5:00pm

Monday - Sunday

Monday - Sunday

Monday - Sunday

Monday - Sunday

Monday - Sunday

Monday - Sunday

Monday - Sunday

Monday - Sunday

Monday - Sunday

Monday - Sunday

Monday - Sunday

Monday - Sunday

Monday - Sunday

Monday - Sunday

Monday - Sunday

Monday - Sunday

Monday - Sunday

Monday - Sunday

Monday - Sunday

Body Painting/Body Art (Monday - Sunday)

Volunteer Here (Monday - Sunday)

Big Dirty's Morning Bar (9:30am-1:30pm)

Be a Lamplighter! (Monday - Sunday) (5:00pm-7:00pm)

Black Rock University Chemistry Dept. Coffee Lab (9:00am-10:00am)

Muses' Ark Parade (Monday - Sunday)

Spectre (Monday - Sunday) (10:00pm-3:00am)

The Fairy Formal (M-9:00-12:00am)

Shambhala Meditation (4:00pm-5:10pm)

Cleu Celebration (M-5:00pm-5:30pm)

Guerrilla Poetry (Monday - Sunday)

1970, all over again

Electrory Performance Events (8:00pm-10:00pm)

Image © 2006 digitalglobe  
Image © 2006 TerraMetrics  
© 2006 Europa Technologies

Kundodig



新嘉坡

新嘉坡





YOU













**Thank you.**